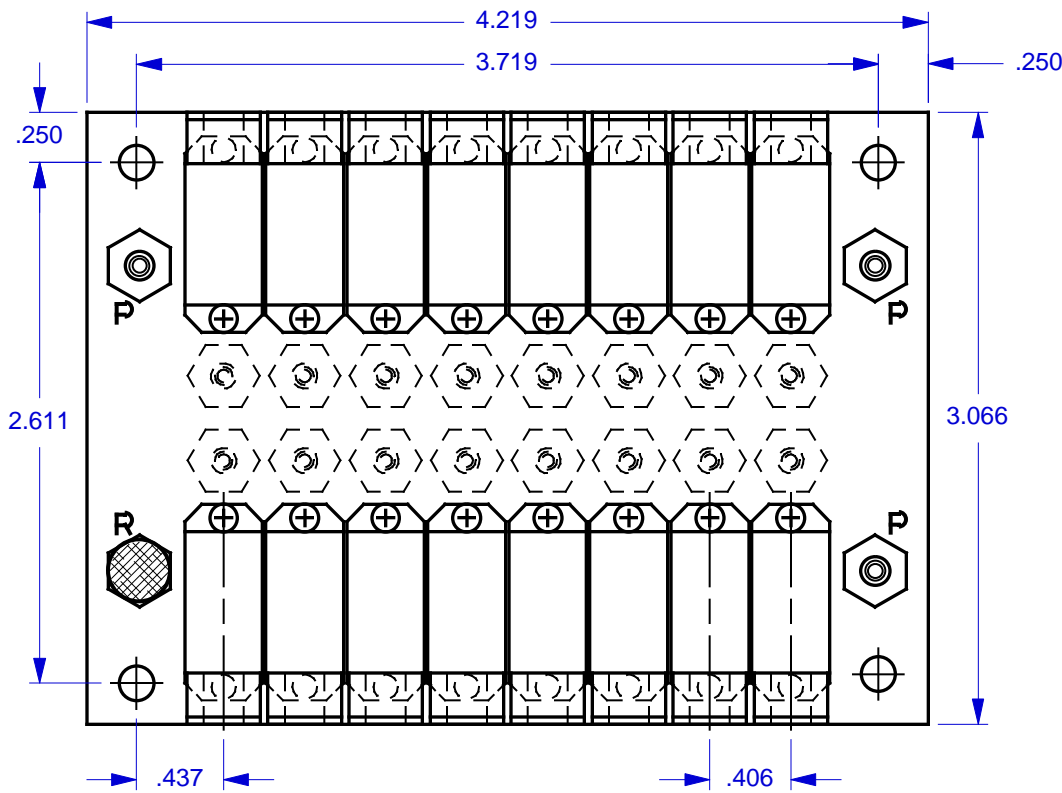


MODEL: BUR/6104-DBL-XX-BOT-10

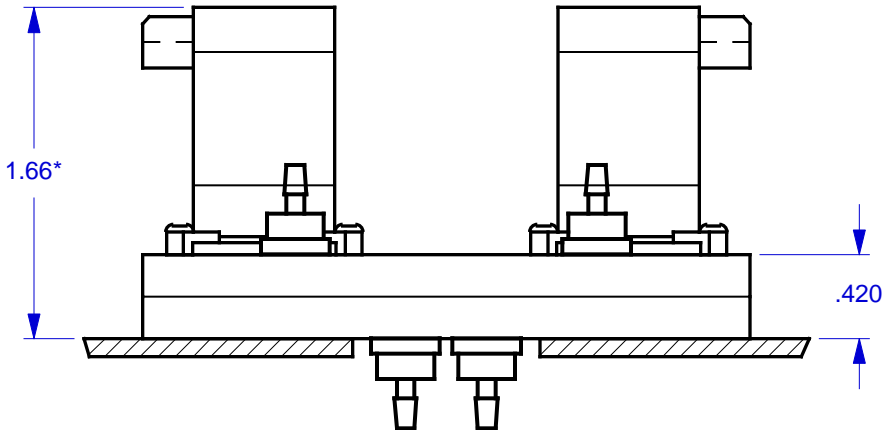
WHERE "XX" DESIGNATES THE NUMBER OF VALVE STATIONS

REV		CN #		REVISION CHANGE		DESCRIPTION		DATE	
X1		N/A		DRAWN					05 JUN 00

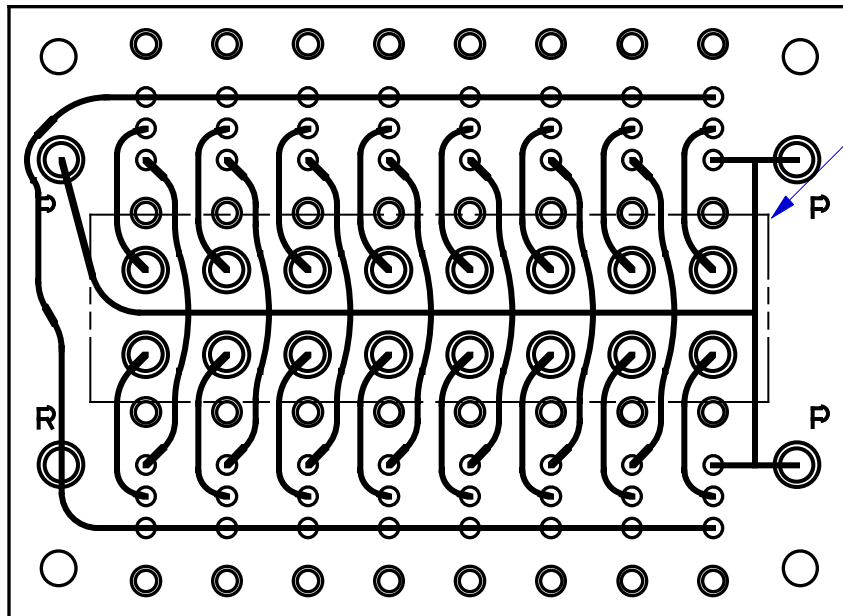


MODEL FEATURES:

- MOUNTS 2 EQUAL ROWS OF VALVES AND OFFERS GREATER ECONOMY, CONNECTIVITY AND CONVENIENCE.
- ACCOMMODATES BÜRKERT™ 6104 TYPE VALVES.
- SPECIFY FROM 4 (2 PER ROW) TO 32 (16 PER ROW) VALVES, USING EVEN NUMBERS. ADD OR SUBTRACT .406" (10.3 MM) OF MANIFOLD LENGTH PER VALVE PAIR.
- TOP PORTED FOR EASY ACCESS AND MINIMUM REQUIRED SPACE.
- VALVES ARE MOUNTED VIA EXCLUSIVE 'NO-STRESS' BONDED-IN BRASS INSERTS.
- MULTIPLE (3) "P" PORTS PROVIDE FOR DAISY CHAINING OR SUPPLY PRESSURE DISTRIBUTION.
- THREADED EXHAUST "R" PORT.
- INTERNAL CHANNELS ARE .078" WIDE x .078" DEEP, BRILLIANTLY POLISHED AND WITHSTAND PRESSURE OVER 125 P.S.I.



* BÜRKERT VALVES COME IN OTHER CONNECTOR STYLES. THIS DOCUMENT SHOWS ONLY ONE TYPE. CONTACT BÜRKERT FOR MORE INFORMATION AND DIMENSIONAL DIFFERENCES.



PANEL CUT-OUT REQD: .938 H x 3.40 W MIN. RECOMMENDED FOR 8 VALVE MANIFOLD. FOR OTHER MANIFOLDS, ADD OR SUBTRACT .406" (10.3 MM) TO WIDTH PER VALVE

NOTES:

1. MANIFOLDS ARE SUPPLIED WITHOUT ANY HARDWARE OR VALVES. THE COMPONENTS SHOWN ARE FOR ILLUSTRATION PURPOSES ONLY.
2. ALL PORTS ARE THREADED #10-32 UNF - 2B. M5.0 THREADS ARE AVAILABLE ON SPECIAL REQUEST.
3. MOUNTING HOLES ARE .156 DIAMETER FOR #6 SCREWS. USE OF .375 DIAMETER X .040 THICK (MIN) NYLON WASHERS UNDER THE MOUNTING SCREW HEADS ARE HIGHLY RECOMMENDED.
4. MANIFOLD MATERIAL IS POLISHED ACRYLIC. CLEAR (BLUISH TINT) P.V.C. IS ALSO AVAILABLE ON SPECIAL ORDER AT INCREASED PRICE.
5. SPECIFICATIONS SUBJECT TO CHANGE WITHOUT NOTICE.

MicroAdvances

6073 N.W. 167th STREET, BLDG. C-21
MIAMI, FL. USA 33015 • (305) 556-4801

NAME: BUR/6104-DBL-16-BOT-10
PART/DWG NO: 600283 REV: A
ASSEMBLY: N/A
DWN BY: J.W. DATE: 05 JUN 00
DESIGNED BY: XX
REF: BUR/6104

BÜRKERT CRONTROMATIC USA, Irvine, CA 92614

SCALE: 1 : 1 @ 7.9 X 13.3 SHEET: 1 OF 1